

# Benefits of Steel Beams – Contractor Perspective

6/18/26

Eric Coburn,  
Vice President

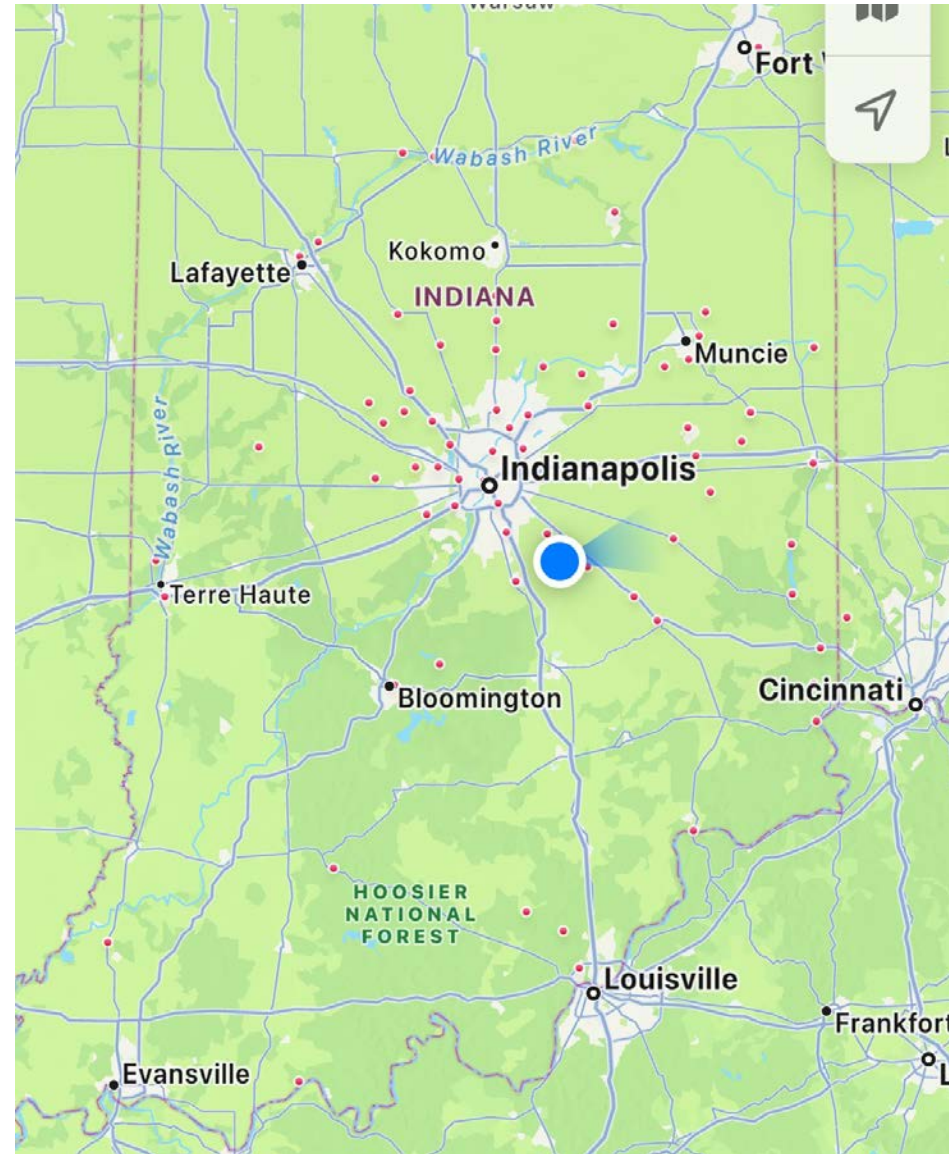


ESTABLISHED 1965  
[www.beatyinc.com](http://www.beatyinc.com)



# Benefits of Steel Beams – Contractor Perspective

6/18/26



## SR 32 over White River, Winchester, IN

Project Summary:  
Complete removal of existing, 5 –span, flat slab bridge and replacing with new single-span steel beam bridge



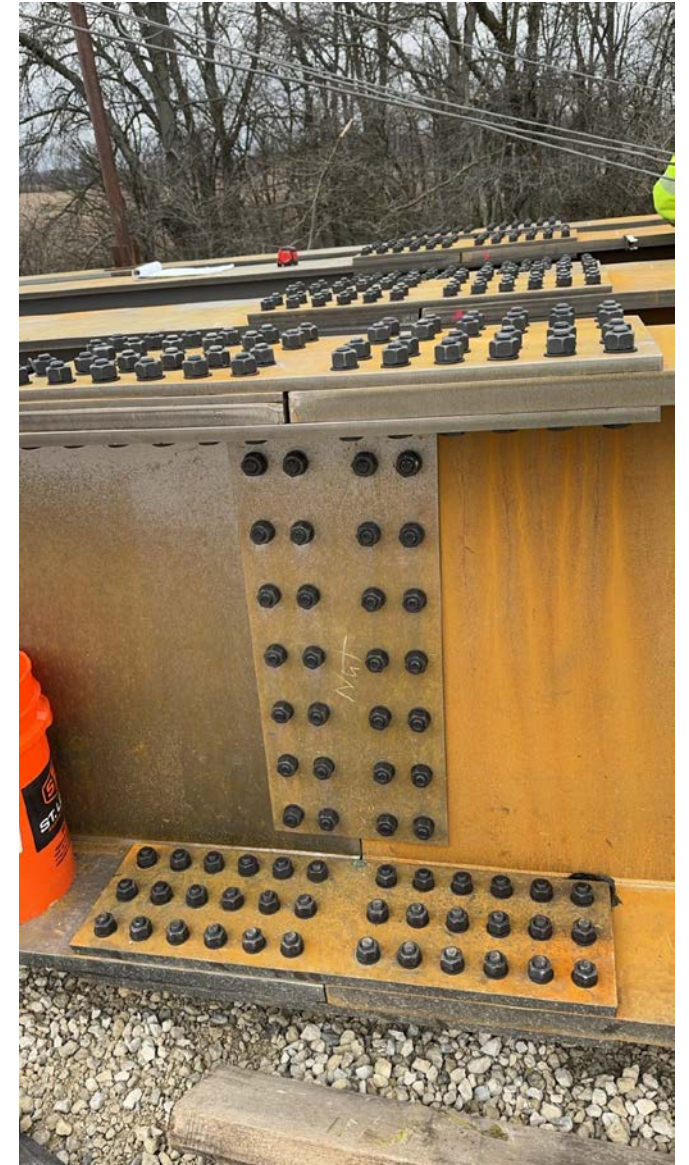
# Benefits of Steel Beams – Contractor Perspective

6/18/26

## SR 32 over White River, Winchester, IN

### Benefit 1: Beam Delivery – Rural Roads

- Two pieces per beam line
- Splice on site



## SR 32 over White River, Winchester, IN

### Benefit 2: Beam Installation

- No causeway needed
- Single crane pick behind end bent
- Savings: \$80,000



## I-65 over Keystone Ave, Indianapolis, IN

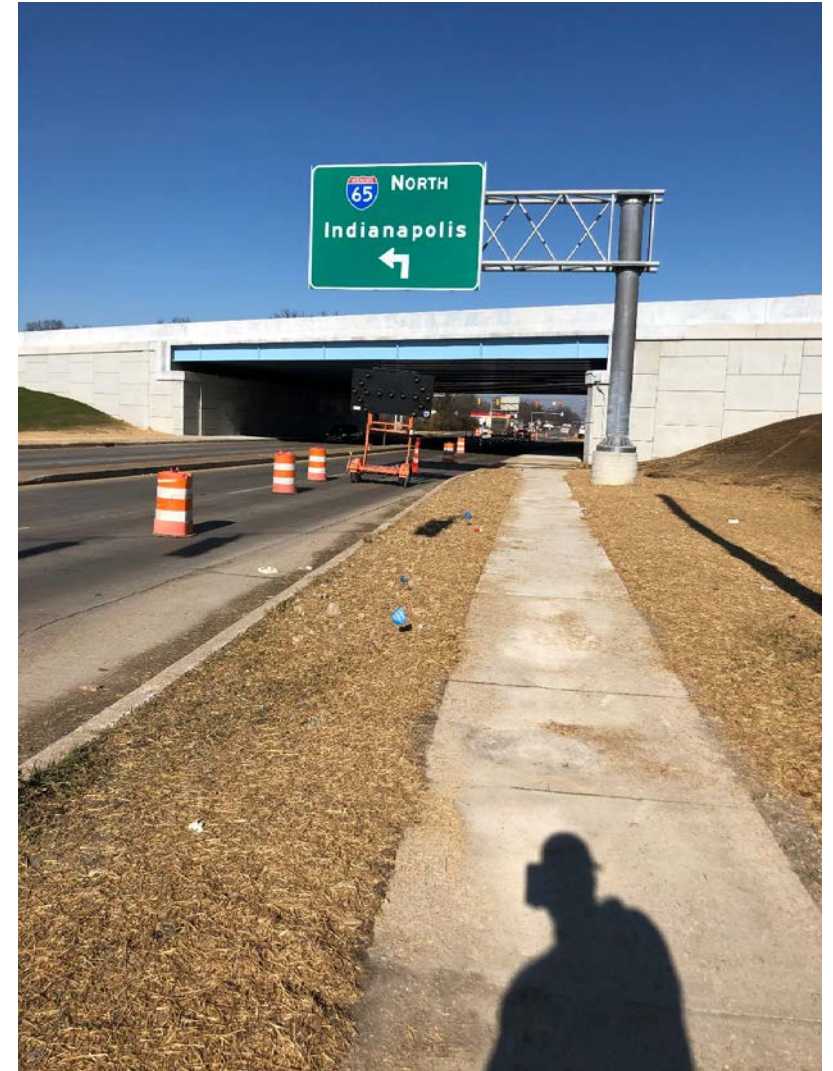
Project Summary:  
Removal of existing  
bridge and replacement  
with single span steel  
beam bridge



## I-65 over Keystone Ave, Indianapolis, IN

### Benefit 1: Simple Maintenance of Traffic

- Less impact to traveling public
- Savings: \$20,000



## I-65 over Keystone Ave, Indianapolis, IN

### Benefit 2: Beam Installation

- From city street instead of interstate
- Single crane picks
- Savings: \$50,000



# Benefits of Steel Beams – Contractor Perspective

6/18/26

## East Street over Norfolk Southern Railroad, Wabash, IN

Project Summary:  
New, 130' long single  
span steel beam  
bridge over previous  
at grade railroad  
crossing



# Benefits of Steel Beams – Contractor Perspective

6/18/26

## East Street over Norfolk Southern Railroad, Wabash, IN

Benefit 1: Single  
crane pick

- Savings: \$80,000



# Benefits of Steel Beams – Contractor Perspective

6/18/26

## East Street over Norfolk Southern Railroad, Wabash, IN

Benefit 2: Less road fill needed due to shallow beams



# Benefits of Steel Beams – Contractor Perspective

6/18/26

## CR-800E over Shawnee Creek, Rush County, IN

Project Summary:  
Removal of single  
span box beam  
bridge and  
replacement with  
steel beams



# Benefits of Steel Beams – Contractor Perspective

6/18/26

## CR-800E over Shawnee Creek, Rush County, IN

- Benefits: Did not need causeway and could set beams with excavator behind end bents
- Savings: \$20,000



## SR 9 over Mississinewa River, Marion, IN

Project Summary:  
Remove and replace  
bridge deck on 7-  
span bridge.  
Remove and replace  
end bents, bearing  
assemblies, and  
beams on end spans



## SR 9 over Mississinewa River, Marion, IN

### Benefits:

- Smaller crane and lighter jacks:  
\$20,000 savings
- Allowed for field manipulation of beams



# Benefits of Steel Beams – Contractor Perspective

6/18/26

## I-69 over 82<sup>nd</sup> Street, Indianapolis, IN – Clear Path 2

Project Summary:  
Removal of 2  
bridges, replaced  
with 5 bridges



# Benefits of Steel Beams – Contractor Perspective

6/18/26

## I-69 over 82<sup>nd</sup> Street, Indianapolis, IN – Clear Path 2

Benefits: Easier removal of existing beams

- Savings: Over \$100,000

